



Citilog provides video analytics solution for Traffic Lights system modernization

Municipality of San Pedro Sula, Honduras

Mission

Home to 1.5 million people and without a subway system or light rail network, traffic in San Pedro Sula is recognized as one of the main concerns for its citizens.

Authorities are well aware of it, and not only wanted to help alleviate the commuting, but also intended to reduce the high carbon emissions causing the smog on the streets.

The Municipality was committed to reduce the traffic congestion and modernize the traffic light system, which would also improve road safety.

The Municipality wanted the solution to be cost effective but also eye-catching, and a cutting-edge Control Center would be the visible part of it. On top of this, there were time constraints, since the rollout project should be limited to 6 months.

A consortium, SEMCOR, was created for the deployment of the solution. SEMEX, a member of the consortium and a key player for urban traffic solutions in Latin America, chose Citilog for the video-based solutions for Intersection Control and Traffic Data Collection.

Solution

Due to the timing constraints for the deployment and the high maintenance requirements for a project of this magnitude, the use of magnetic loops was neither practical nor cost-effective.

SEMCOR decided to use a video-based solution for Intersection Control and Traffic Data collection.

Virtual loops are used to feed the Traffic Controller of the traffic lights at the intersections.

110 Citilog XCam-p sensors and 40 XCom boards are deployed for this purpose.

"The Axis M1125-E allows us to perform the Traffic Data Collection, but also we are able to display the videos on the video wall of the control center, thanks to its HD resolution."

Mr. Armando Calidonio, Mayor of San Pedro Sula

"The XCam sensor is all we need for this purpose: a reliable and cost effective solution that gets the jobs done", in words of Adrián Rojas, ITS manager at SEMCOR.

20 XCam-TD sensors are also deployed in order to gather traffic data that is later post-processed by the traffic engineers, who work on the

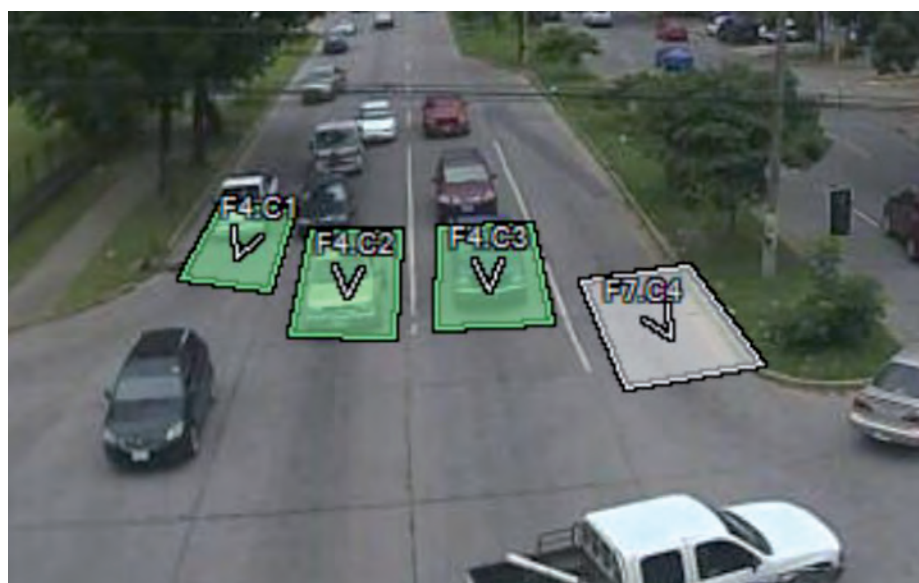
city planning.

The control center displays a cutting edge video wall that required a high resolution and SEMCOR chose the Axis M1125-E, for its HD resolution and for being an extremely cost-effective camera. Citilog provides 30 SmartTraffic-TD applications deployed on these cameras.

Results

Citilog's Intersection Control solution, comprising XCam-p, XCam-TD and XCom, provides a reliable and cost effective input for the Traffic Controllers in the new traffic light system of the city.

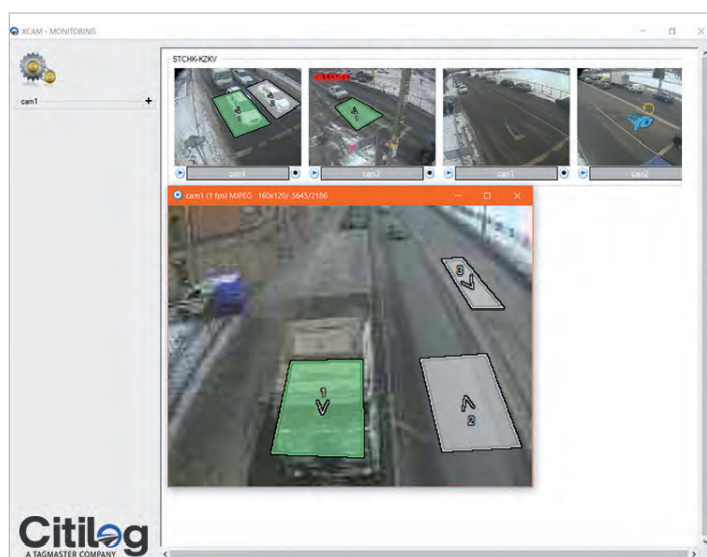
The video wall at the Control Center is displaying HD video streams coming from Axis M1125-E cameras that also collect traffic data, thanks to the Citilog SmartTraffic-TD application.



Virtual loops



Heavy traffic in San Pedro Sula



XCam monitoring



XCam installed on a pole mounted on the traffic light